



THE AUTHENTIC TERRITORY WEDDING DESTINATION



A little bit about Mt Bundy Station

Mt Bundy Station, established in 1911 is located in the Adelaide River region of the Northern Territory, just over an hour from Darwin City and was established by pioneer buffalo hunter Fred Hardy. The original size of this cattle property was 1.1 million acres (4000sq km) with boundaries to Litchfield station to the west, (now Litchfield National Park) and Kakadu National Park to the east.

It has since been subdivided into smaller properties, Mt Bundy Station is now 300 acres. Since 2007 Mt Bundy has been family owned and managed.

The accommodation we offer today was originally the managers homestead, the Cooks Cottage and the single man's Stockman's Quarters, along with a few new cabins,

With 15 years of love under our belt, we are partial to weddings. Our DIY

flexibility and various stunning spaces leave you with all the choices to customize our venue into your dream day. Whether you're after something intimate for two or space to fit two hundred, we can help make it happen. Our unique property offers so many options that you just can't find in most conventional function venues.

When you celebrate your big day at Mt Bundy you gain exclusive access to our beautiful property, as well as being able to have all of your friends and family stay too. Our venue accommodates up to 300 people between our ten individually styled dwellings, glamping tents and number of powered and unpowered campsites.

Being an outdoor venue we are available for celebrations during our dry season

April - September only.





Ceremony Spaces



Photography by: Gem Photographics

The Banyan Tree

Get married under our ancient and beautiful 300 year old Banyan Tree

This grand space is shaded for most of the day and is perfect for
both large and small ceremonies





Photography by: Gem Photographics

The Bronco Panels

Get married by our historic bronco panels and rustic cactus garden, with a backdrop of our billabong and distant hills.

This space is ideal for a late afternoon ceremony, with plenty of room for everyone.



The Billabong

Nestled amongst our paddocks, our billabong is the perfect location for any sized wedding. Filled with life in the months of May to September.
The billabong offers a spot for every couple.

This space is a popular option for both elopements and weddings with a larger crowd. Get married to the sound of birdlife or make it a little later and have the sunsets golden light fall upon your magic ceremony.



Photography by: Kate Freestone Photography

The River

Marry amongst our ancient bamboo on the banks of the
mighty Adelaide River.

This space makes for a magical ceremony and is suitable for
both large and small ceremonies

Reception Spaces



Photography by: Vicki Miller Photography

The Beer Paddock

Located beside our licensed Cheeky Bull Bar and beneath shady mahogany trees, our beer paddock is a popular option for wedding celebrations, with an entertainment stage and lighting already in place.

You can keep it rustic with our beer paddock tables or theme the area as you desire



Photography by: Married by Kelly & Josh

The Homestead Lawn

Set at the base of our historic mango tree and beside
our billabong full of life.

This reception area is fully grassed all year round and is
located next to our Billabong House.



Photography by: Married by Kelly & Josh

The Riverbed

On the riverbed, the sky is your limit. Offering a shady oasis of historic ghost gum trees and surrounding bamboo. The riverbed is a blank canvas that can be transformed into your dream wedding.

Our Services





Photography by: Married by Kelly & Josh

The Bar

Cheeky Bull Bar and Beer Paddock

The Cheeky Bull Bar and beer paddock is our licensed bar area and offers a professional service to your guests as a set drinks service at an amount to suit your needs or as a cash bar.



Catering

The Cheeky Pizza

Pizza is a rustic option ideal for an outdoor wedding.

Imagine a long wooden bench laid with gourmet pizzas, small pottery planters filled with fresh herbs placed in between. Or signature Cheeky Bull Bar pizzas placed on wood pizza paddles layed across a simple white table cloth labeled with beautifully handwritten labels.

We will make sure they keep coming in hot until the last one is left standing.

Grazing Tables

Grazing Tables or Platters are also an option for pre-dinner or even for a light dinner.

Our grazing tables are packed with an array of cheese, charcuterie, seasonal fruit, olives, dips, antipasto bites, fresh bread, crackers & platter accompaniments.

All grazes can be beautifully styled with fresh Australian greenery to add wow-factor to your special occasion.

All quote's dependent on the number of guests and inclusions.



*Our accommodation
inclusions*

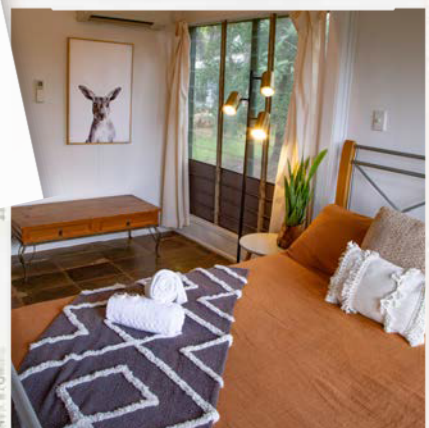


Cooks Cottage

Self-contained 2 bedroom cottage for up to 6 guests.

Exclusive use - 2 bedroom - airconditioned - 1 bathroom - kitchen and dining - lounge - TV - situated near the pool in shady gardens - deck area and BBQ

The Cooks Cottage was originally just that, where the station cook resided and prepared meals for the working stockman of Mt Bundy Station. It is a quaint little cottage near the pool set in shady surrounds under a 40-year-old mahogany tree.



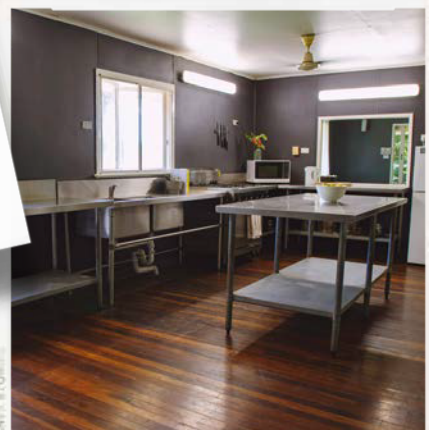
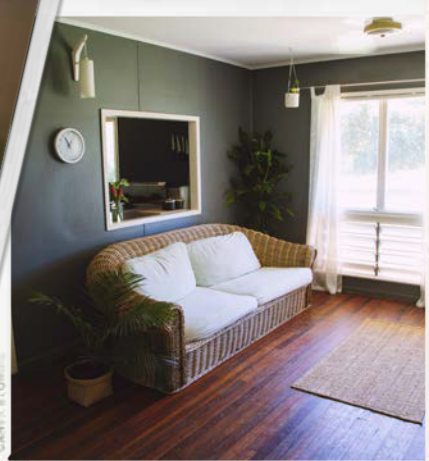


Billabong House

Self-contained 5 bedroom house for up to 16 guests.

Exclusive use - 5 bedrooms - air-conditioned rooms - 2 bathrooms - kitchen - large dining room - lounge - TV - set amongst large shady gardens - outdoor bbq area

This grand old homestead was originally the station manager's residence, a beautiful piece of Northern Territory rural history. Wooden floors throughout and a large screened dining room overlooking a natural bird-filled billabong.





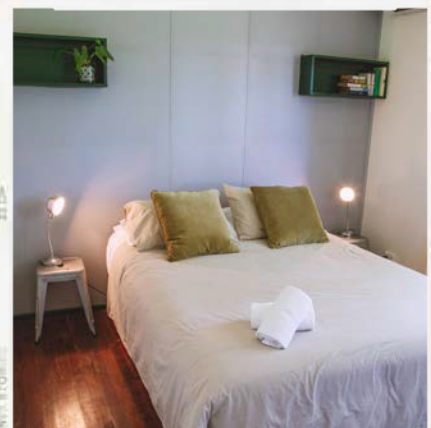
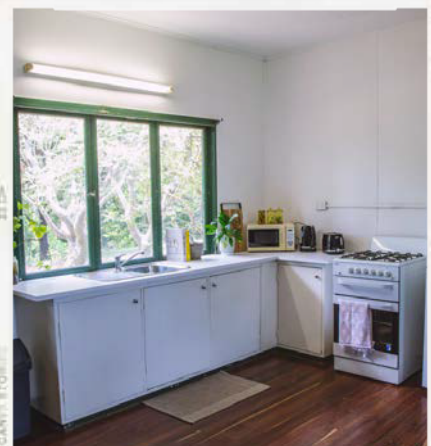
Stockman's Quarters Homestead

Self-contained 7 bedroom house for up to 14 guests.

3 x queen, 2 x Double & 2 x twin room single beds

Exclusive use - 7 bedroom - airconditioned rooms -
2 bathrooms - kitchen & dining - lounge - TV - BBQ -
situated near the pool in shady gardens

Step back in time and enjoy the old "ringers"
accommodation, where the stockman of Mt Bundy
Station lived. It is a grand old homestead with wooden
floors and heaps of character.



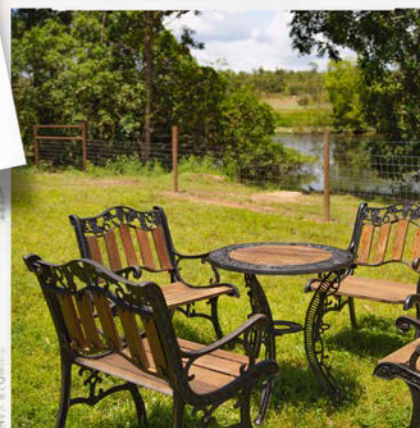


Monsoon Cabin

Self-contained modern 1 bedroom cabin for up to 4 guests.

Exclusive use - 1 bedroom - air-conditioned - 1 bathroom - kitchen and dining - TV - situated on the bank of the billabong - deck area and BBQ.

A secluded tropical oasis on the edge of our bird filled billabong.





Brahman Bungalow

Dry season only - Available from May to September.
 Self-contained 1 bedroom glamping for up to 4 guests.
 Exclusive use - 1 bedroom - no air-conditioning -
 open air - fan - private ensuite with outdoor shower -
 kitchenette - situated on the bank of the billabong -
 deck area and BBQ.

Whilst staying in the bungalow, guests have access to a
 private ensuite with an outdoor shower under the stars.





Hillview House

Self-contained 3 bedroom house for up to 7 guests.

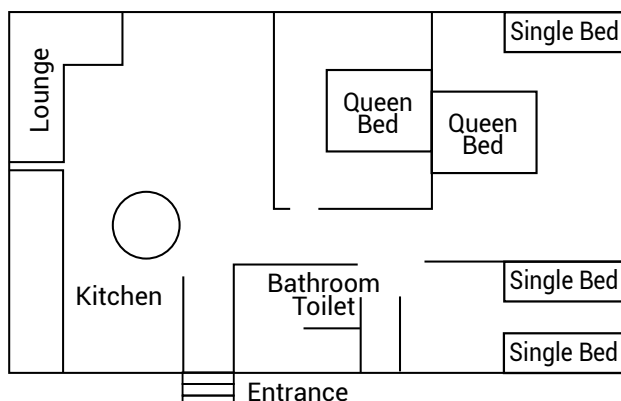
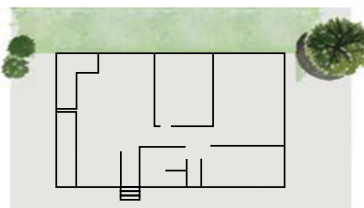
Exclusive use - 3 bedrooms - air-conditioned rooms - 1 bathroom - kitchen - large dining room - lounge - TV - set amongst large shady gardens - outdoor bbq area

This renovated heritage house was originally one of the Station Manager's homes, a beautiful piece of Northern Territory rural history. Wooden floors throughout and a large outdoor area.

Hillview House



Outdoor Area



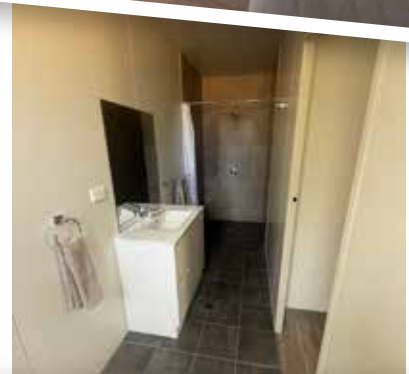
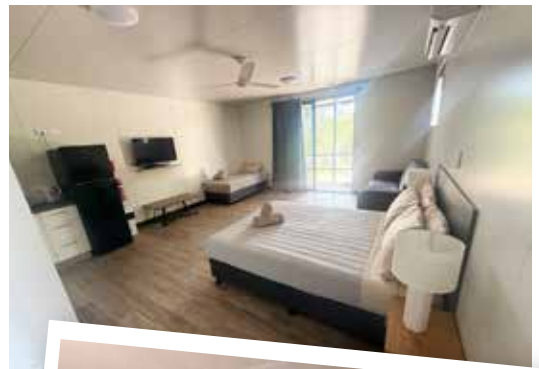


Studio Cabins

Self-contained studio for up to 5 guests.

4 Studios available.

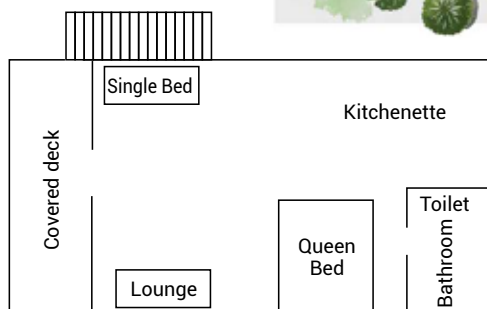
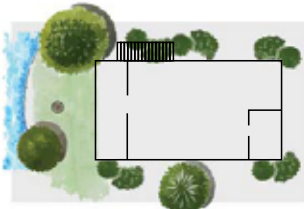
(2 are wheelchair friendly with assistance) -
air-conditioned - bathroom - kitchenette -
situated on the bank of the billabong with a
covered deck area.



Studio
Cabins



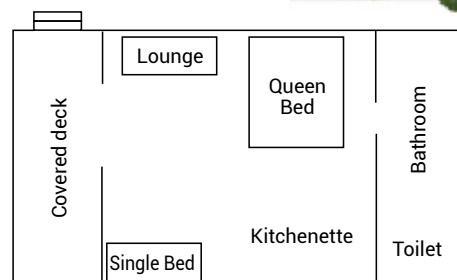
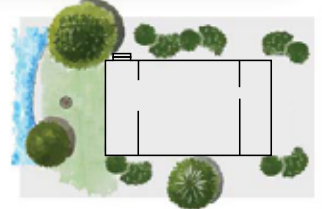
No. 1 and 2. Wheelchair friendly.



Studio
Cabins



No. 3 and 4





Camping, Caravan Sites & Eco Tents

Powered and unpowered, shady camping sites and caravan sites all with hot water showers and amenities.

10 Eco Tents are also available, they are powered with a fan and a light with an outdoor deck.



Frequently asked Questions

Can you serve breakfast?

We sure can. Just let us know how many people it will be for, what breakfast food you would like and we will provide a quote.

Do you have bar options for locations other than the Cheeky Bull Bar?

Unfortunately, our license is restricted to the Cheeky Bull Bar and Beer Paddock. However, we may be able to acquire a temporary license to supply and serve out of a mobile bar on your behalf. Fee's will apply..

Where else can our guests stay when your accommodation is full?

We have onsite powered and unpowered camping options exclusively for your guests at your wedding. Otherwise, we recommend looking into Adelaide River for accommodation options such as the Adelaide River Inn and Adelaide River Territory Lodge on Air Bnb.

Some guests are from interstate, how can they get out to you?

The best option is to hire a motorhome or caravan, such as a Maui Berth motorhome. This gives interstate guests the ability to make the trip to the Top End a holiday! Head through Kakadu National park on your way down to the wedding and finish off the trip with a few days exploring Litchfield National park on your way back to the airport.

Can I use vendors?

Of course! We work with a lot of vendors and welcome new ones, See our list of preferred vendors.

How far are you from Darwin?

We are located just under an hour and a half's drive from the Darwin Airport off

the Stuart Highway on Haynes Road in the Adelaide River Region. That makes us en-route and nearby to Kakadu National Park, Litchfield National Park, Robin Falls, Douglas Daly (Tjuwaliyn) Hot Springs, Daly River and Nitmiluk at Katherine, to name just a few holiday spots.

Can I DIY any of my wedding?

You sure can! A lot of our brides do. Let us know if you have any special requests and we will do our best to help.

Will there be other people on-site during our big day?

Nope! Unless you are booking our Elopement package, all our other wedding options give you and your guests exclusive use of the grounds on your wedding day.

Can we have a fire?

Fire pits are welcome at the Billabong house and Riverbed flats, and there is a fireplace permanently setup at the Cheeky Bull Bar. However, no fires are permitted during fire bans.

I noticed a special spot when we were looking around the property, can we use it for our wedding?

Of course! Many couples have. However, some spots do come with limitations or restrictions and we only offer "Beautification" of our designated locations.

Can we get photos with the animals?

You are more than welcome to. If you spot our animals in the paddock feel free to get a photo in front of them but don't cross the fence unless you can run across the paddock in 9 seconds, because our horses, donkeys, buffalo and pig can do it in 10!

*A destination wedding without
having to leave the country*





Contact

E. mtbundy@cartersretail.com
315 Haynes Rd, Adelaide River NT

@mbsweddings 

Mt Bundy Station 



The Cars

The Rolls Royces and the Bull Catcher

Bring the ultimate final touch to your intimate celebration. Our cars make great pictures and you are welcome to use them on your special day.

