



NORTHERN TERRITORY

# MT BUNDY STATION

- NORTHERN TERRITORY -

SINCE 1911

AN AUTHENTIC TERRITORY EVENT DESTINATION



# *A little bit about Mt Bundy Station*

Mt Bundy Station, established in 1911 is located in the Adelaide River region of the Northern Territory, just over an hour from Darwin City and was established by pioneer buffalo hunter Fred Hardy. The original size of this cattle property was 1.1 million acres (4000sq km) with boundaries to Litchfield station to the west, (now Litchfield National Park) and Kakadu National Park to the east.

It has since been subdivided into smaller properties, Mt Bundy Station is now 300 acres. Since 2007 Mt Bundy has been family owned and managed.

The accommodation we offer today was originally the managers homestead, the Cooks Cottage and the single man's Stockman's Quarters, along with a few new cabins,

With 15 years of love under our belt, we are partial to weddings and events.

Our DIY flexibility and various stunning spaces leave you with all the choices to customize our venue into your ultimate event. Whether you're after a small gathering or space to fit two hundred, we can help make it happen. Our unique property offers so many options that you just can't find in most conventional function venues.

With your Mt Bundy event you gain exclusive access to our beautiful property, as well as being able to have all of your guests stay too. Our venue accommodates up to 300 people between our five individually styled dwellings, glamping tents and number of powered and unpowered campsites.

Being an outdoor venue we are available for events during our dry season

April - September only.





# *Events Spaces*







Photography by: Vicki Miller Photography

## *The Beer Paddock*

Located beside our licensed Cheeky Bull Bar and beneath shady mahogany trees, our beer paddock is a popular option for events, with an entertainment stage and lighting already in place.

You can keep it rustic with our beer paddock tables or theme the area as you desire





Photography by: Married by Kelly & Josh

## *The Homestead Lawn*

Set at the base of our historic mango tree and beside  
our billabong full of life.

This reception area is fully grassed all year round and is  
located next to our Billabong House.





## *The Riverbed*

On the riverbed, the sky is your limit. Offering a shady oasis of historic ghost gum trees and surrounding bamboo. The riverbed is a blank canvas that can be transformed into your ultimate event.



# *Our Services*







Photography by: Married by Kelly & Josh

## *The Bar*

### **Cheeky Bull Bar and Beer Paddock**

The Cheeky Bull Bar and beer paddock is our licensed bar area and offers a professional service to your guests as a set drinks service at an amount to suit your needs or as a cash bar.

**Please see our Beverage Packages available.**





# *Beverage Packages*

**Contact us for arrangement and pricing**

**All packages include soft drinks and juice. Beverages and spirits on consumption and bar tab options available. Beverage selection is subject to availability on given products; and can vary seasonally.**

## **Sparkling**

Wide range available, tailored to suit your needs and budget.

## **White Wine**

Wide range available, tailored to suit your needs and budget.

## **Red Wine**

Wide range available, tailored to suit your needs and budget.

## **Bottled Beer**

Wide range available, tailored to suit your needs and budget.





# Catering

## The Cheeky Pizza

Pizza is a rustic option ideal for an outdoor event.

Imagine a long wooden bench laid with gourmet pizzas, small pottery planters filled with fresh herbs placed in between. Or signature Cheeky Bull Bar pizzas placed on wood pizza paddles layed across a simple white table cloth labeled with beautifully handwritten labels.

We will make sure they keep coming in hot until the last one is left standing.

## Grazing Tables

Grazing Tables or Platters are also an option for pre-dinner or even for a light dinner.

Our grazing tables are packed with an array of cheese, charcuterie, seasonal fruit, olives, dips, antipasto bites, fresh bread, crackers & platter accompaniments.

All grazes can be beautifully styled with fresh Australian greenery to add wow-factor to your event.

Please see our Pizza and Grazing Table Packages available.





# *Catering Packages*

## **PIZZA SERVICE**

Contact us for arrangement and pricing.

## **GRAZING PLATTER SERVICE**

Contact us for arrangement and pricing.

## **GRAZING PLATTERS**

Our beautifully presented grazing tables are packed with an array of cheese, charcuterie, seasonal fruit, olives, dips, antipasto bites, fresh bread, crackers & platter accompaniments.

## **GOURMET PIZZAS**

We'll keep the hot wood fired pizzas coming out, layed out on a long wooden bench with planter boxes of herbs for your guests to enjoy.





*Our accommodation  
inclusions*



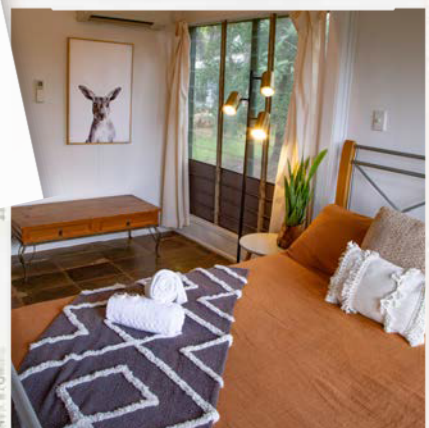


## Cooks Cottage

Self-contained 2 bedroom cottage for up to 6 guests.

Exclusive use - 2 bedroom - airconditioned - 1 bathroom - kitchen and dining - lounge - TV - situated near the pool in shady gardens - deck area and BBQ

The Cooks Cottage was originally just that, where the station cook resided and prepared meals for the working stockman of Mt Bundy Station. It is a quaint little cottage near the pool set in shady surrounds under a 40-year-old mahogany tree.











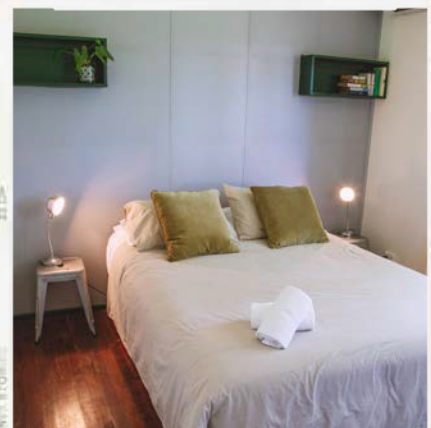
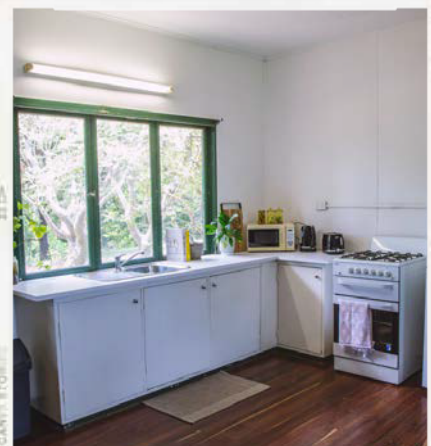
## Stockman's Quarters Homestead

Self-contained 7 bedroom house for up to 14 guests.

3 x queen, 2 x Double & 2 x twin room single beds

Exclusive use - 7 bedroom - airconditioned rooms -  
2 bathrooms - kitchen & dining - lounge - TV - BBQ -  
situated near the pool in shady gardens

Step back in time and enjoy the old "ringers"  
accommodation, where the stockman of Mt Bundy  
Station lived. It is a grand old homestead with wooden  
floors and heaps of character.





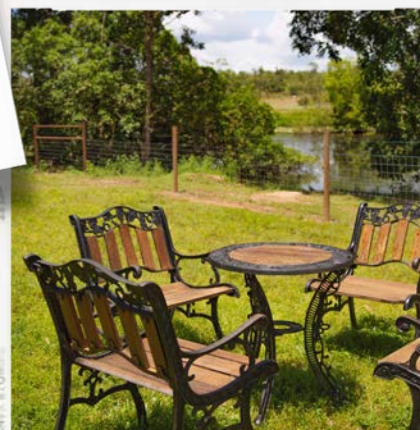


## Monsoon Cabin

Self-contained modern 1 bedroom cabin for up to 4 guests.

Exclusive use - 1 bedroom - air-conditioned - 1 bathroom - kitchen and dining - TV - situated on the bank of the billabong - deck area and BBQ.

A secluded tropical oasis on the edge of our bird filled billabong.







## Brahman Bungalow

Dry season only - Available from May to September.

Self-contained 1 bedroom glamping for up to 4 guests.

Exclusive use - 1 bedroom - no air-conditioning - open air - fan - private ensuite with outdoor shower - kitchenette - situated on the bank of the billabong - deck area and BBQ.

Whilst staying in the bungalow, guests have access to a private ensuite with an outdoor shower under the stars.







## Hillview House

Self-contained 3 bedroom house for up to 7 guests.

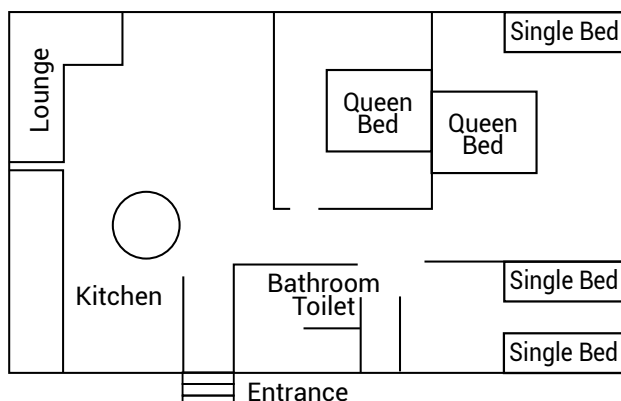
Exclusive use - 3 bedrooms - air-conditioned rooms - 1 bathroom - kitchen - large dining room - lounge - TV - set amongst large shady gardens - outdoor bbq area

This renovated heritage house was originally one of the Station Manager's homes, a beautiful piece of Northern Territory rural history. Wooden floors throughout and a large outdoor area.

Hillview House



Outdoor Area





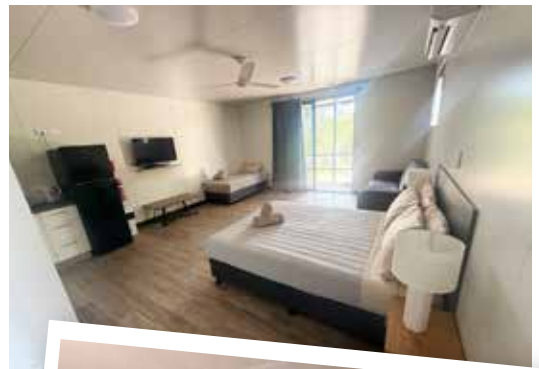


## Studio Cabins

Self-contained studio for up to 5 guests.

4 Studios available.

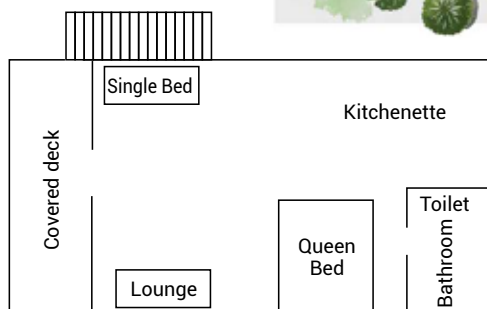
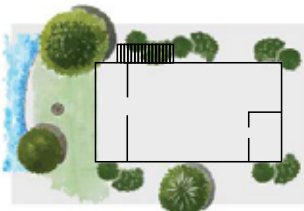
(2 are wheelchair friendly with assistance) -  
air-conditioned - bathroom - kitchenette -  
situated on the bank of the billabong with a  
covered deck area.



Studio  
Cabins



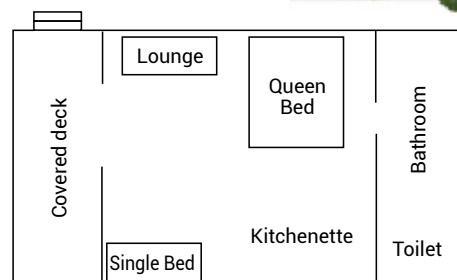
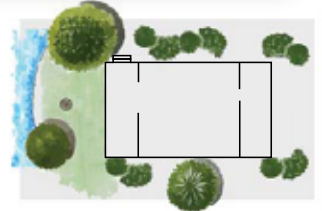
No. 1 and 2. Wheelchair friendly.



Studio  
Cabins



No. 3 and 4





# *Two person Glamping Tents*

*-Back to the bush-*



Access to a camp fire, camp kitchen and shower facilities power, lights and a fan.

Our two person glamping tents are set up in a secluded spot at the edge of our accommodation. Surrounded by shady trees these tents offer guests the space to get back to one with nature. Whilst staying in tents, guests have access to a camp kitchen and shower facilities.

Linen included 'This glamping option is a great way for additional guests to enjoy the evening and stay.

We have 10 tents with a sleeping capacity of 20 persons.





## Camping

Powered and un-powered options with access to hot water ablutions and laundry.

Our shady, grassed, powered and unpowered campsites are available exclusively to your guests for your event. With access to camp kitchen facilities and hot water ablutions, this is a great way for additional guests to safely enjoy the evening and stay. We have camping facilities for up to 300 guests extra!

For the interstate guest we recommend hiring a motor home and exploring all the Top End has to offer on your way to and from the event weekend!



# Frequently asked Questions

## **Can you serve breakfast?**

We sure can. Just let us know how many people it will be for, what breakfast food you would like and we will provide a quote.

## **Do you have bar options for locations other than the Cheeky Bull Bar?**

Unfortunately, our license is restricted to the Cheeky Bull Bar and Beer Paddock. However, we may be able to acquire a temporary license to supply and serve out of a mobile bar on your behalf. Fee's will apply..

## **Where else can our guests stay when your accommodation is full?**

We have onsite powered and unpowered camping options exclusively for your guests at your event. Otherwise, we recommend looking into Adelaide River for accommodation options such as the Adelaide River Inn and Adelaide River Territory Lodge on Air Bnb.

## **Can we use vendors?**

Of course! We work with a lot of vendors and welcome new ones, See our list of preferred vendors.

## **How far are you from Darwin?**

We are located just under an hour and a half's drive from the Darwin Airport off the Stuart Highway on Haynes Road in the Adelaide River Region. That makes us en-route and nearby to Kakadu National Park, Litchfield National Park, Robin Falls,

Douglas Daly (Tjuwaliyn) Hot Springs, Daly River and Nitmiluk at Katherine, to name just a few holiday spots.

## **Can I DIY any of the event?**

You sure can! Let us know if you have any special requests and we will do our best to help.

## **Will there be other people on-site during our event?**

Nope! All our event options give you and your guests exclusive use of the grounds.

## **Can we have a fire?**

Fire pits are welcome at the Eco Tents and Riverbed flats, and there is a fireplace permanently setup at the Cheeky Bull Bar. However, no fires are permitted during fire bans.

## **I noticed a special spot when we were looking around the property, can we use it for our event?**

Of course! However, some spots do come with limitations or restrictions and we only offer "Beautification" of our designated locations.

## **Can we get photos with the animals?**

You are more than welcome to. If you spot our animals in the paddock feel free to get a photo in front of them but don't cross the fence unless you can run across the paddock in 9 seconds, because our horses, donkeys, buffalo and pig can do it in 10!



# *A Destination Event*



## *Contact*

E. mtbundy@cartersretail.com  
315 Haynes Rd, Adelaide River, NT



mtbundystation